



Rosetta Common Services Interface™

Version 6.0

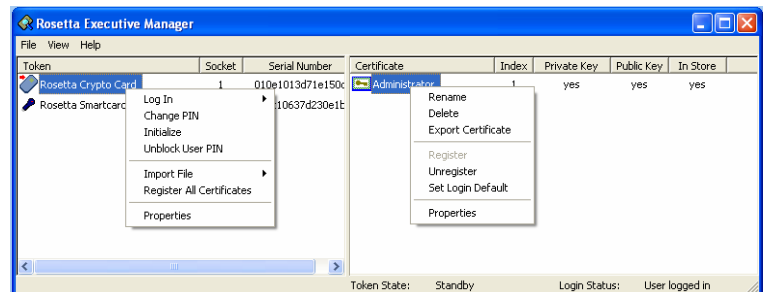
Rosetta Common Services Interface (Rosetta CSI™), the software component of Rosetta Executive Suite™, provides utilities for managing security devices, certificates, and policies; changing token PINs; and configuring sockets. It integrates the LYNKS Privacy Card®, LYNKS Series II HSM, Rosetta® Series I and Series II USB, Rosetta Series I and Series II smart card, or Department of Defense Common Access Card (CAC) with certificate-enabled applications such as smart card logon, e-mail digital signature and encryption, Virtual Private Network, and SSL authentication.

Benefits

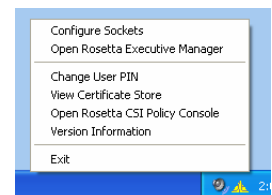
- ▲ **Easy to Use** Utility interfaces are user friendly and have accessible help. Users can perform many management functions without requiring IT assistance.
- ▲ **Easy to Install** Place Rosetta CSI on a single system or deploy it remotely throughout an enterprise domain by using Group Policy.
- ▲ **Easy to Maintain** Designed for enterprises, but also perfect for small business. Cost-effective, mature product has few support issues. New industry standards and requirements are quickly available through updates.

Features

- ▲ As part of Rosetta Executive Suite, Rosetta CSI includes compatibility with Rosetta smart card, Rosetta USB, LYNKS HSM, and Department of Defense CAC.
- ▲ Supports Suite B cryptographic algorithms for AES, SHA-2, and ECC.
- ▲ SPYRUS Taskbar Assistant menu provides access to utilities.
- ▲ Rosetta Executive Manager utility makes token and certificate management quick and easy.
- ▲ Rosetta CSI Policy Console manages policies for a local machine. Enterprises can allow users to set individual policies.
- ▲ SPEX®2 Socket Configuration Utility manages local token connections.
- ▲ Implements two-factor authentication (PIN and token) for secure access to data on the certificate.
- ▲ Rosetta CSI Bio™ add-on provides support for biometric two- and three-factor authentication.



Rosetta Executive Manager



Taskbar Assistant

Technical Specifications

Minimum Hardware Requirements

- ▲ Pentium II 233 MHz processor
- ▲ 10 MB free disk space
- ▲ 128 MB memory

Tested on and compatible with:

Operating Systems

- ▲ Microsoft Windows 2000 Server with Service Pack 4
- ▲ Microsoft Windows Server 2003, Release 2 with Service Pack 1
- ▲ Microsoft Windows 2000 with Service Pack 4
- ▲ Microsoft Windows XP Professional with Service Pack 2
- ▲ Microsoft Windows XP Home with Service Pack 2

Browsers

- ▲ Microsoft Internet Explorer 6.0 or later (128-bit cipher strength required)
- ▲ Netscape Navigator 4.2 or later (requires included PKCS #11 plug-in)
- ▲ Mozilla Firefox 1.0 or later (requires included PKCS #11 plug-in)

E-Mail Applications

- ▲ Microsoft Outlook 2002 or later
- ▲ Microsoft Outlook Express 6.0 or later
- ▲ Netscape Communicator 4.2 or later (requires included PKCS #11 plug-in)
- ▲ Mozilla Thunderbird 1.0 or later (requires included PKCS #11 plug-in)
- ▲ Compatible with other applications using Microsoft CryptoAPI or PKCS #11

SPYRUS, Inc.



For additional details about SPYRUS products, visit www.spyrus.com or contact us at:

- ▲ USA +1 408 392-9131 info@spyrus.com
- ▲ Australia +61 7 3220-1133 info@spyrus.com.au



©2006-2008 SPYRUS, Inc. All rights reserved. SPYRUS, the SPYRUS logos, Security to the Edge, Rosetta, LYNKS Privacy Card, LYNKS, Rosetta Common Services Interface, Rosetta CSI, Rosetta Executive Suite, Rosetta CSI Bio, and SPEX/, are either registered trademarks or trademarks of SPYRUS in the United States and/or other countries. All other trademarks are the property of their respective owners. Individual SPYRUS products may embody technology protected by one or more of the following patents or patent applications: U.S. Pat. Nos. 6,003,135; 6,088,802; 5,761,305; 5,889,865; 5,896,455; 5,933,504; 5,999,626; 6,122,736; 6,141,420; 6,336,188; 6,487,661; 6,563,928; 6,618,483; 6,981,149; U.S. Pat. Appl. Ser. Nos. 09/434,247; 09/558,256; 09/942,492; 10/185,735; Can. Pat. Appl. Ser. Nos. 2176972; 2176866; 2202566; 2174261; 2155038; 2174260; E.P. Pat. Appl. Ser. No. 96201322.3; 97106114.8; 96105920.1; 95926348.4; 96105921.9
Document number 400-240001-03