



SafeEnterprise Security Management Center

Security Management For Demanding Enterprise And Global Networks

SafeEnterprise™ Security Management Center (SMC) from SafeNet redefines network security management with a robust, Java™-based management platform that authenticates any number of SafeNet solutions deployed on the enterprise network. The SMC remotely configures, monitors, and performs firmware updates for SafeNet network security products. The SMC automatically manages any product that has been integrated into the extensible management center architecture. By providing a single management element to administer security across heterogeneous networks, the SMC reduces the cost of network security management.

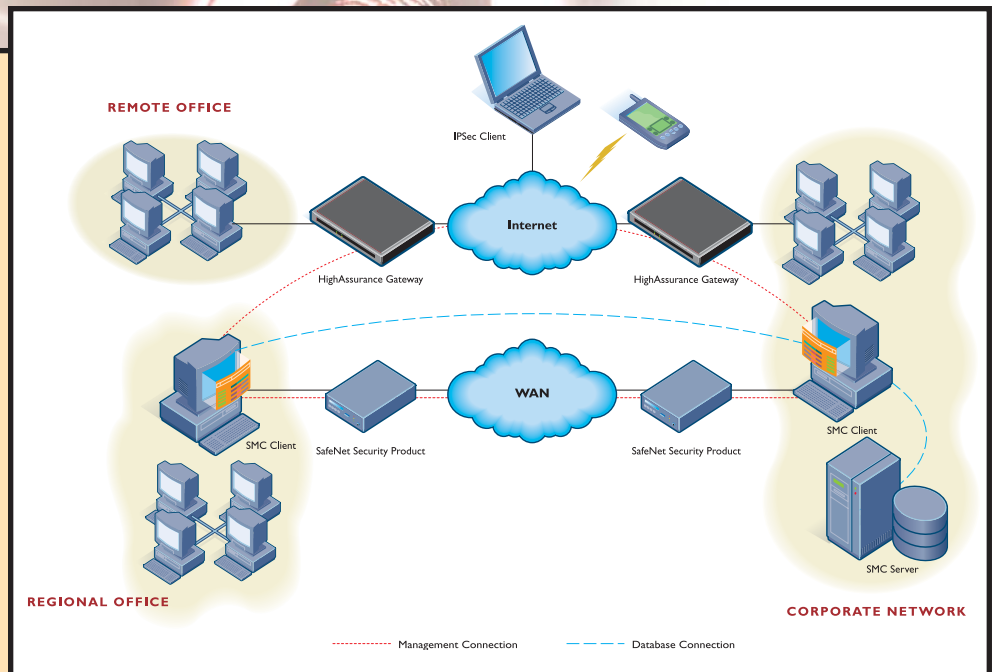
With SafeEnterprise Security Management Center's point-and-click interface, graphical representation of the network topology, and configuration wizards, it's easy to visualize, configure, modify, and manage network security. What's more, SafeNet security products enable organizations to implement a broad range of security policies that can limit access to specific devices or provide unlimited access to the entire network.

The management communications between the SMC and SafeNet security products is through the use of digital certificates to create two-way authenticated highly secure channels, eliminating the possibility of spoofing or eavesdropping. The SNMP architecture provides interoperability with enterprise network management software suites for additional device and network monitoring options.

The SafeEnterprise Security Management Center is the only true enterprise network security management application that provides centralized security management for ATM, Frame Relay, and IP networks as well as point-to-point Link connections. The internal, high-performance, relational database provides high availability, and the client-server design allows flexible management for remote administration. With the SMC, SafeNet provides an easy to use, flexible, and robust network security management platform that scales to networks of any size. To complete the security model, the SMC maintains a complete audit trail of network security activities, including administrator operations, user logons, logoffs, SNMP traps, and alarms.

Key Features

- Single security management platform for both VPN and WAN products
- Flexible operation- distributed or centralized, single or multi-user operation
- Easy access to alarms and audit logs
- Online help and documentation
- Extensible platform for new security services and devices
- Standards-based platform for simplified management and interoperability
- Expandable to eight multi-managers with distinct clients and databases



SafeEnterprise Security Management Center Specifications

Managed SafeNet Devices and Applications

- SafeEnterprise Link Encryptor
- SafeEnterprise Frame Encryptor
- SafeEnterprise ATM Encryptor
- SafeNet HighAssurance™ 2000 Gateway
- SafeNet HighAssurance™ 4000 Gateway
- SafeNet HighAssurance™ 1000 Gateway
- SafeNet HighAssurance™ 500 Gateway
- HighAssurance™ Remote

Management Capacity

- Thousands of SafeNet security units (constrained only by the platform)
- Up to 5 simultaneous management clients

Protocols Supported

- SNMP v1, v2
- SNMP MIB-II plus secured SafeNet extensions

Security Standards

- FIPS 46-2 (DES)
- FIPS 186 (DSS)
- ANSI X3.92 (DES)
- ANSI X9.52 (3DES)
- ANSI X9.42 (Diffie-Hellman key management)

Encryption Algorithms

- DES (Data Encryption Standard)
- 3DES

Automated Key Management

- Diffie-Hellman public key exchange

Authentication

- X.509 v3 certificates

Customer Support

- 30-day software warranty
- Extended support and maintenance contracts available
- Worldwide sales, service and distribution

Recommended Minimum System

SafeEnterprise Security Management Center for Solaris™ (server or client)

- 500 MHz Sun® Blade 100 or better
- Solaris 8 OS
- High-resolution color monitor (1024 by 768)
- 512 MB RAM
- 8 GB free hard disk space
- CD-ROM drive
- 3.5" floppy drive
- Network interface card
- Mouse/keyboard

SafeEnterprise Security Management Center for Windows® (server or client)

- Pentium III 500 MHz or higher
- Windows® 2000 or XP (client only)
- High-resolution color monitor (1024 by 768)
- 320 MB RAM
- 8 GB free hard disk space
- CD-ROM drive
- 3.5" floppy drive
- Network interface card
- Mouse/keyboard

Distributors and resellers located worldwide.



Corporate: 4690 Millennium Drive, Belcamp, MD 21017, USA Tel: 410.931.7500 or 800.931.7524 eMail: info@safenet-inc.com

Australia +61 3 9882 8322

Brazil +55 11 6121 6455

China +86 10 8266 3936

Finland +358 20 500 7800

France +33 1 41 43 29 00

Germany +49 18 03 72 46 26 9

Hong Kong +852 3157 7111

India +91 11 2691 7538

Japan +81 3 5719 2731

Japan (Tokyo) +81 3 5719 2731

Korea +82 31 705 8212

Mexico +52 55 5575 1441

Netherlands +31 73 658 1900

Singapore (I) +65 6274 2794

Singapore (2) +65 6297 6196

Taiwan +886 2 6630 9388

UK +44 1932 579200

UK (Basingstoke) +44 1256 345900

U.S. (Massachusetts) +1 978.539.4800

U.S. (New Jersey) +1 201.333.3400

U.S. (Virginia) +1 703.279.4500

U.S. (Irvine, California)

+1 949.450.7300

U.S. (Santa Clara, California)

+1 408.855.6000

U.S. (Torrance, California)

+1 310.533.8100