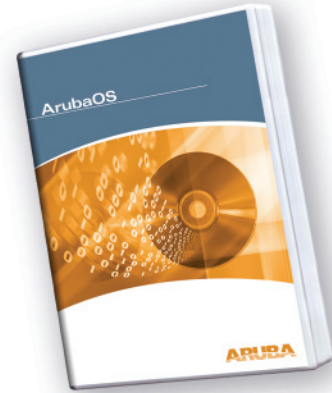


ArubaOS VPN Server Module

The ArubaOS VPN Server module enables Aruba mobility controllers to provide high-performance VPN tunnel termination to internal and external users through a variety of standards-based client software. Virtual Private Networks have become an important tool in securing wireless networks, particularly when the client device does not support the latest wireless LAN security standards such as WPA2 or 802.11i. The VPN Server module also extends the mobile edge to remote sites through site-to-site VPN tunnels between Aruba mobility controllers or 3rd-party VPN concentrators.



MASSIVE SCALABILITY AND PERFORMANCE

- Dedicated packet processing and encryption hardware
- Supports thousands of connections

VPN CONCENTRATOR EMULATION

- Supports variety of existing standards based clients
- Zero touch deployments for Windows 2000/XP

STREAMLINED DEPLOYMENT

- Integrated VPN gateway
- Flexible authentication options

SITE TO SITE VPN

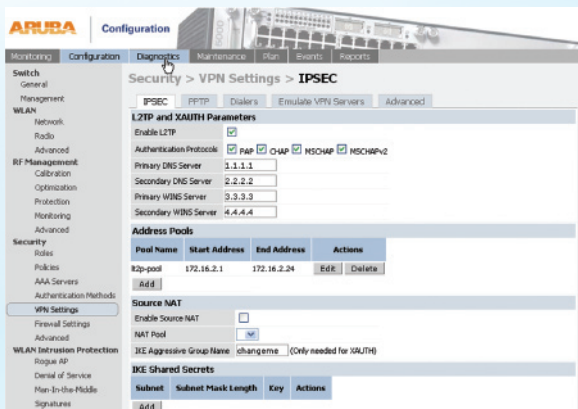
- Secure centralized management for multi-site networks
- Extend secure mobility beyond a single campus

MASSIVE SCALABILITY AND PERFORMANCE

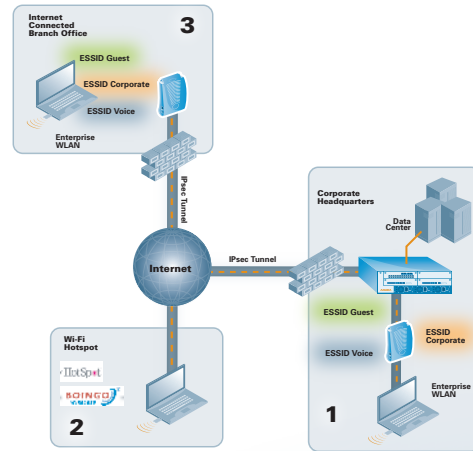
Aruba mobility controllers contain dedicated hardware for packet processing and encryption providing massive scalability and high-throughput performance even when serving thousands of simultaneous VPN connections.

VPN CONCENTRATOR EMULATION

A unique capability of the VPN Server allows mobility controllers to emulate any other VPN concentrator in the network. By using this feature, enterprise customers with existing VPN deployments can use existing clients, including their configurations, to connect to an Aruba mobility controller, easing deployment and lowering the cost of ownership.



Simplified browser-based or familiar CLI driven configuration of VPN settings



Secure local, branch office and hotspot connections with the Aruba VPN server

ZERO-TOUCH VPN

Eliminate the high costs of VPN client management by automating the client installation. Aruba mobility controllers can securely download the zero-touch Mobile Edge Client to Windows 2000 or Windows XP client machines. This client software contains pre-configured parameters to access the VPN, and will act as a front-end to the built-in Microsoft VPN client. This allows a user to install a VPN client on-the-fly without the need to know anything more than their username and password.

UNIQUE VPN ROAMING

Aruba's unique feature set allows internal users to roam between access points without requiring re-authentication, improving the user experience. The Aruba VPN Server also supports NAT Traversal for reliable VPN connectivity over the Internet through NAT gateways such as broadband routers that may not include support for IPSEC.

FLEXIBLE AUTHENTICATION OPTIONS

The VPN Server includes seamless integration with RSA SecurID two-factor authentication systems. The VPN Server also includes support for new-PIN and next-PIN mode for RSA SecurID implementations.

Also included is support for LDAP, as well as an internal authentication database. With the optional Advanced AAA module, network administrators can enable the selection of authentication server based on FQDN (Fully Qualified Domain Name) or Windows realms.

SITE TO SITE VPN

Extend the Mobile Edge to locations beyond the main site/campus by utilizing the capability of the Aruba mobility controllers to establish VPN tunnels across non-secure networks such as the Internet. This provides a secure path for all data and management traffic between different sites of an organization and ensures that the users get the same level of security and mobility in different sites or branch offices of the organization.

SPECIFICATIONS

Protocol Support

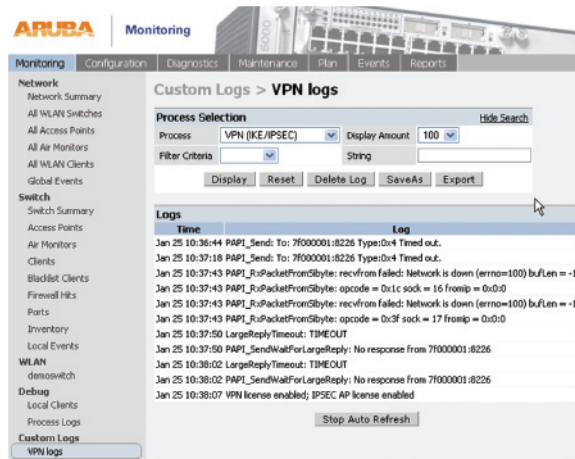
- L2TP/IPsec (RFC 3193)
- XAUTH/IPsec
- PPTP (RFC 2637)
- RRRP-based redundancy across mobility controllers

Authentication Flexibility

- Internal database
- RADIUS
- Active Directory
- LDAP
- SecurID
- Windows Realm and FQDN-based selection of authentication server with Advanced AAA module

Performance

PLATFORM	3DES THROUGHPUT	VPN USERS
6000-Sup2	3.5 Gbps	2000
6000-Sup1	1.8 Gbps	2000
2400	4000 Mbps	256
800	200 Mbps	128



VPN logs help monitoring and troubleshooting

FEATURE

BENEFIT

VPN roaming

- Clients connected via VPN can roam between access points without need to re-authenticate, providing seamless secure mobility.

On-the-fly VPN dialer installation

- Users can install pre-configured VPN dialer on the fly, lowering the cost of deployment.

VPN server emulation

- Investment protection throughout use of existing VPN clients from leading vendors to connect to Aruba mobility controllers directly.

Optional Advanced AAA module

- Allows selection of authentication server based on FQDN or realm information, easing network integration projects resulting from mergers and acquisitions.

Optional Remote AP module

- Extends corporate WLAN environment seamlessly over the internet using IPsec allowing immediate and corporate-like WLAN connectivity anywhere with an internet connection.



The Mobile Edge Company

www.arubanetworks.com

1322 Crossman Avenue
Sunnyvale, California 94089
Tel: 408.227.4500 • Fax: 408.227.4550

© 2005 Aruba Wireless Networks, Inc. All rights reserved. Aruba Networks and Aruba The Mobile Edge Company are trademarks of Aruba Wireless Networks, Inc. All other trademarks or registered trademarks are the property of their respective holders. Specifications are subject to change without notice.