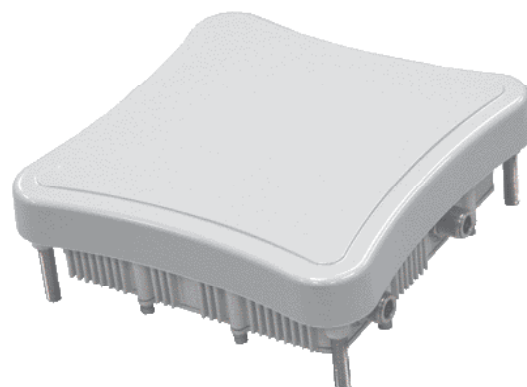


## The Aruba AP 80SB & MB

The Aruba 80SB & MB product family is the ideal wireless solution for harsh outdoor environments where conventional Wi-Fi access points or wireless bridges cannot be deployed. The Aruba 80SB & MB are dual-radio 802.11a/b/g access points with wireless backhaul capability that can also function as secure WDS point to point or point to multi-point bridges. Designed for extreme, all-weather deployment, the Aruba AP 80SB & MB offer a flexible solution that supports a variety of applications using attachable antennas and an integrated PPP over Ethernet client enables remote deployments over service provider networks.



### Network Configuration

#### AP-80SB

- Stand-alone Wireless Access Point (802.11b/g) with support for wireless backhaul over 5GHz
- Point to Point WDS Bridge for 5GHz or 2.4GHz

#### AP-80MB

- Stand-alone Wireless Access Point (802.11a/b/g) with support for wireless backhaul over 5GHz or 2.4GHz
- Point to Point WDS Bridge for 5GHz or 2.4GHz
- Point to Multi-Point WDS Bridge for 5GHz or 2.4GHz

### Antennas

#### AP-80SB

Integral 5GHz Antenna Specifications

- Gain (5.150 ~ 5.850GHz) 17.0 dBi
- VSWR 1.5:1
- Front to Back Ratio >25dB
- Frequency Range 5.150 ~ 5.850GHz
- VSWR 1.8:1
- Power handling 10W
- Pattern: 30 degree beam width directional
- Application - wireless backhaul / WDS bridging

#### AP-80MB

- None. External N-type female antenna interfaces only (see interfaces electrical)

### Radio Specs - 5GHZ

IEEE 802.11a

- Frequency Bands Supported
  - 5.150 ~ 5.250GHz, country specific
  - 5.250 ~ 5.350GHz, country specific
  - 5.470 ~ 5.725GHz, country specific
  - 5.725 ~ 5.825/5.850GHz, country specific
- Radio technology: orthogonal frequency division multiplexing (OFDM)
- Modulation type – BPSK, QPSK, 16-QAM, 64-QAM
- Transmit power – configurable by system administrator/professional installer
- MAC – CSMA/CA with ACK
- Operating channels:
  - US, Canada - 13
  - ETSI - up to 19
  - Japan - Disabled
- Data rates (Normal) Mode: 6, 9, 12, 18, 24, 36, 48, 54 Mbps per channel
- Data rates (Turbo) Mode: 12, 18, 24, 36, 48, 54, 72, 96 108 Mbps per channel
- Radio band selectable via software

### Radio Specs - 2.4GHZ

IEEE 802.11b

- Frequency Bands Supported
  - 2.400 ~ 2.4835GHz, channels country specific
- Radio technology – direct sequence spread spectrum (DSSS)
- Modulation type – CCK, BPSK, QPSK
- Transmit power – configurable by system administrator
- MAC – CSMA/CA with ACK
- Operating channels:
  - US, Canada - 11
  - ETSI - 13
  - Japan 14
- Data rates: 1, 2, 5.5, 11 Mbps per channel
- Radio band selectable via software

IEEE 802.11g

- Frequency Bands Supported
  - 2.400 ~ 2.4835GHz, channels country specific
- Radio technology: orthogonal frequency division multiplexing (OFDM)
- Modulation type – BPSK, QPSK, 16-QAM, 64-QAM
- Transmit power – configurable by system administrator
- MAC – CSMA/CA with ACK
- Operating channels:
  - US, Canada - 11
  - ETSI - 13
  - Japan 13
- Data rates (Normal) Mode: 6, 9, 12, 18, 24, 36, 48, 54 Mbps per channel
- Data rates (Turbo) Mode: 12, 18, 24, 36, 48, 54, 72, 96 108 Mbps per channel
- Radio band selectable via software

Complete country list available at:  
<http://www.arubanetworks.com/products/aps/certification>

### Manageability

- Management of all 802.11 parameters as AP / Bridge
- Network-wide AP management via:
  - Telnet
  - WEB GUI
  - SNMP
- Authentication support
  - Open, Local MAC, RADIUS MAC, Local User Database, RADIUS, IEEE 802.1x
- Encryption support
  - 64-bit / 128-bit / 152-bit WEP, WEP Pre-shared Key, TKIP, AES, WPA, 802.1x

### Interfaces (Electrical)

#### AP-80SB/MB Common Interfaces

- 1 x 10/100 Base-TX auto-sensing Ethernet interface (IP67 8-pin male (pole) M12 circular DIN connector (Au) contacts):
  - Auto-sensing MDI/MDX
  - PoE 48V DC / 1.2A power over Ethernet (non-standard 802.3af)
  - Integral lightning arrester
- 1 x RSSI Low Voltage BNC Interface
- 1 x Electrical Ground / Safety Terminal
- 1 x Integral ENET lightning arrester

#### AP-80SB Interfaces

- 2x 2.4Ghz N-Type Female Antenna Interface

#### AP-80MB Interfaces

- 1 x 2.4Ghz N-Type Female Antenna Interface
- 1 x 5Ghz N-Type Female Antenna Interface

#### Power Adapter Interfaces

##### Access Point (AP) Port

- 1 x 10/100 Base-TX auto-sensing Ethernet (RJ-45) network (AP) interface:
  - Auto-sensing MDI/MDX
  - PoE 48V DC / 1.2A power over Ethernet (non-standard 802.3af)

##### Network (ENET) Port

- 1 x 10/100 Base-TX auto-sensing Ethernet (RJ-45) network (ENET), Auto-sensing MDI/MDX Ethernet Interface Supplied with 8-Pin DIN to RJ-45 CAT-5 Shielded Ethernet Cable (50 m / 164 ft)

### Interfaces (Mechanical)

- 4 x Mounting Bracket Hex Screw Mounting Points
- Ruggedized wall, pole or mast mount hardware provided (articulating in horizontal and vertical planes)

### Visual Indicators (LEDS)

- (Ready) Power on/off (provided on Power Injector)

### Power Requirements

- 48V DC / 1.2A (30W) Power-over-Ethernet (non-standard 802.3af)
- External Power Injector, auto-sensing 100-240V AC Input, 1.5A Output 48 VDC, 1.2A (30W)

### Device Dimensions H/W/D

- 198 x 198 x 70mm (7.80 x 7.80 x 2.76in.)
- Weight - 1.6Kilo (3.53lbs)

### Shipping Dimensions H/W/D

- 500 x 300 x 170mm (19.7 x 11.8 x 6.7in.)
- Gross Weight - 6Kilos (13.22lbs)

### Environmental

#### AP-80

- Temperature
  - Operating: -30 to 55 °C (-22 to 131 °F)
  - Storage: -40 to 80 °C (-40 to 176 °F)
- Humidity 0% - 95% (non-condensing)
- Survival Wind Speed: 201Km/hr / 125mph

#### External Power Adapter

- Temperature
  - Operating: 0 to 60 °C (32 to 140 °F)
  - Storage: -50 to 70 °C (-58 to 158 °F)
- Humidity 0% - 95% (non-condensing)

### Mounting Options

- Wall, pole or mast mount (hardware included)

### Standards

- Ethernet IEEE 802.3 / IEEE 802.3u
- Wireless IEEE 802.11a/b/g
- PPP over Ethernet RFC2516

### Compliance

- cULus listed (only if AC Power Supplied)
- PSE Mark (only if AC Power Supplied)
- IEC 60950 CB certificate and report
- FCC DOC Part 15 Class B (digital portion)
- FCC Part 15 Subpart C 15.247
- FCC Part 15 Subpart E 15.407
- ICES-003 Class B
- RSS 210 (Canada)
- VCCI Class B (Japan)
- Telec 2.4GHz, Channel 14 and 5GHz approved (Japan)
- CE marked with NB letter of opinion for RTTE
  - ETS 300 328 2.4 GHz Band
  - ETS 301 893 5.4 GHz Band
  - ETS 301 489 EMC
- MIC Korea
- SRRC (China)
- AS/NZS CISPR22 Class B
- AS/NZS4771 (C-tick)

### Safety

- UL Listed (UL60950)
- UL Listed (Canadian Electrical Code/CSA 22.2 No. 60950)
- EN60950 / IEC60950

### Warranty

- 90 day parts/labor\*

### Part Numbers

#### AP-80SB

Aruba 80SB Outdoor Wireless 802.11a/b/g Access Point / WDS Point-Point Bridge c/w integral antenna. Includes wall, pole, mast mounting hardware, 48V DC (30W) Power Adapter kit with Ethernet (RJ-45) interface and supplied with 50 Meter AP to Power Ethernet Adapter Cable.

#### AP-80MB

Aruba 80SB Outdoor Wireless 802.11a/b/g Access Point / WDS Bridge. Includes wall, pole, mast mounting hardware, 48V DC (30W) Power Adapter kit with Ethernet (RJ-45) interface and supplied with 50 Meter AP to Power Ethernet Adapter Cable.

#### AP-LAR-1

N-type antenna interface lightning arrester

#### Antenna

Aruba offer a wide variety of outdoor rated detachable antenna types certified for use with the Aruba 80. Please contact your local sales representative for details.



\*Extended with support contract